

# HITACHI

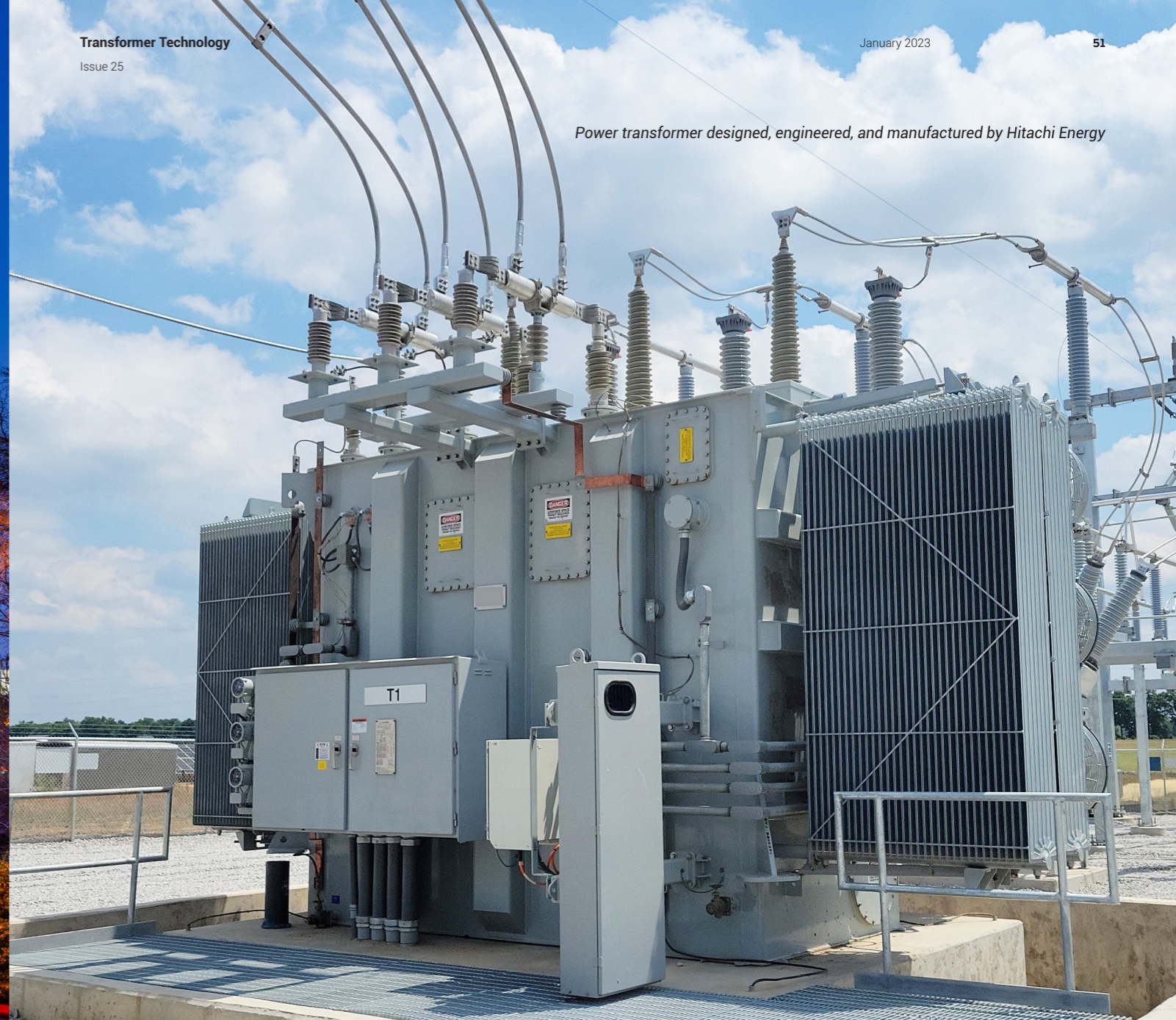
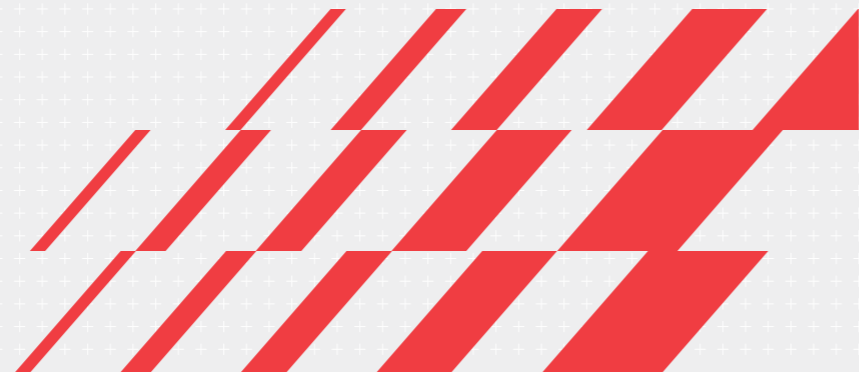
Inspire the Next



Raleigh North Carolina cityscape at night

## Hitachi Energy establishes Engineering Design Center in Raleigh, North Carolina for its North American transformer manufacturing operations

Hitachi Energy's Transformers business is establishing a North American Engineering Design Center at the company's regional headquarters in Raleigh, North Carolina. Located on the Centennial Campus of NC State University, the Raleigh offices will now have a dedicated wing to host its critical transformer design engineering team. This new Center of Excellence brings together the business unit's talented engineers into a central hub to support in-demand engineering activities and will also serve as a focal point for the group's technical recruiting efforts.



Power transformer designed, engineered, and manufactured by Hitachi Energy

### Why Raleigh?

Selecting Raleigh was an easy decision. Raleigh has seen significant growth over the last few years with numerous companies specializing in technology and innovation flocking to the area. The transformer business within Hitachi Energy intends to tap into that energy to draw in the best talent to expand its existing community of world-class engineers.

The area is also appealing for the nationally recognized universities and research institutions located throughout Raleigh and surrounding communities, which also make it attractive for families and students seeking access to a variety of continuing education opportunities.

**“ Establishing this Engineering Design Center in an attractive location like Raleigh, allows us to expand on our strong factory-based design centers and take advantage of a strong, diverse pool of engineering talent developed by the presence of so many well-known educational institutions. Raleigh is a very livable community, which we believe will be attractive to qualified candidates from around the country and the world, who are interested in participating in the clean energy transition with one of the leading transformer manufacturers in the world. ”**

Steve McKinney  
Head of Transformers Business, North America

Photo: Hitachi Energy

Like most manufacturing companies, Hitachi Energy's operations focus on continuous improvement and other lean techniques to establish efficient and streamlined workflows.

**“ If one factory does something a certain way, and another factory does it differently, we have missed the opportunity to simplify our design processes for consistent and repeatable quality; for our employees and ultimately customer satisfaction. ”**

Susmitha Desu

Head of Engineering, Transformer Business, North America

The benefits of bringing teams together have been documented in numerous studies. Many point out better problem solving, increased potential for innovation, more engaged employees, and overall improved morale.

Hitachi Energy's Transformer business in North America continues its goal of becoming the area's Employer of Choice. Offering the flexibility of a modern work/life balance and the excitement of one of the nation's most admired locations, the company aspires to build a team of engaged engineers that truly make a difference.

# HITACHI

## Inspire the Next

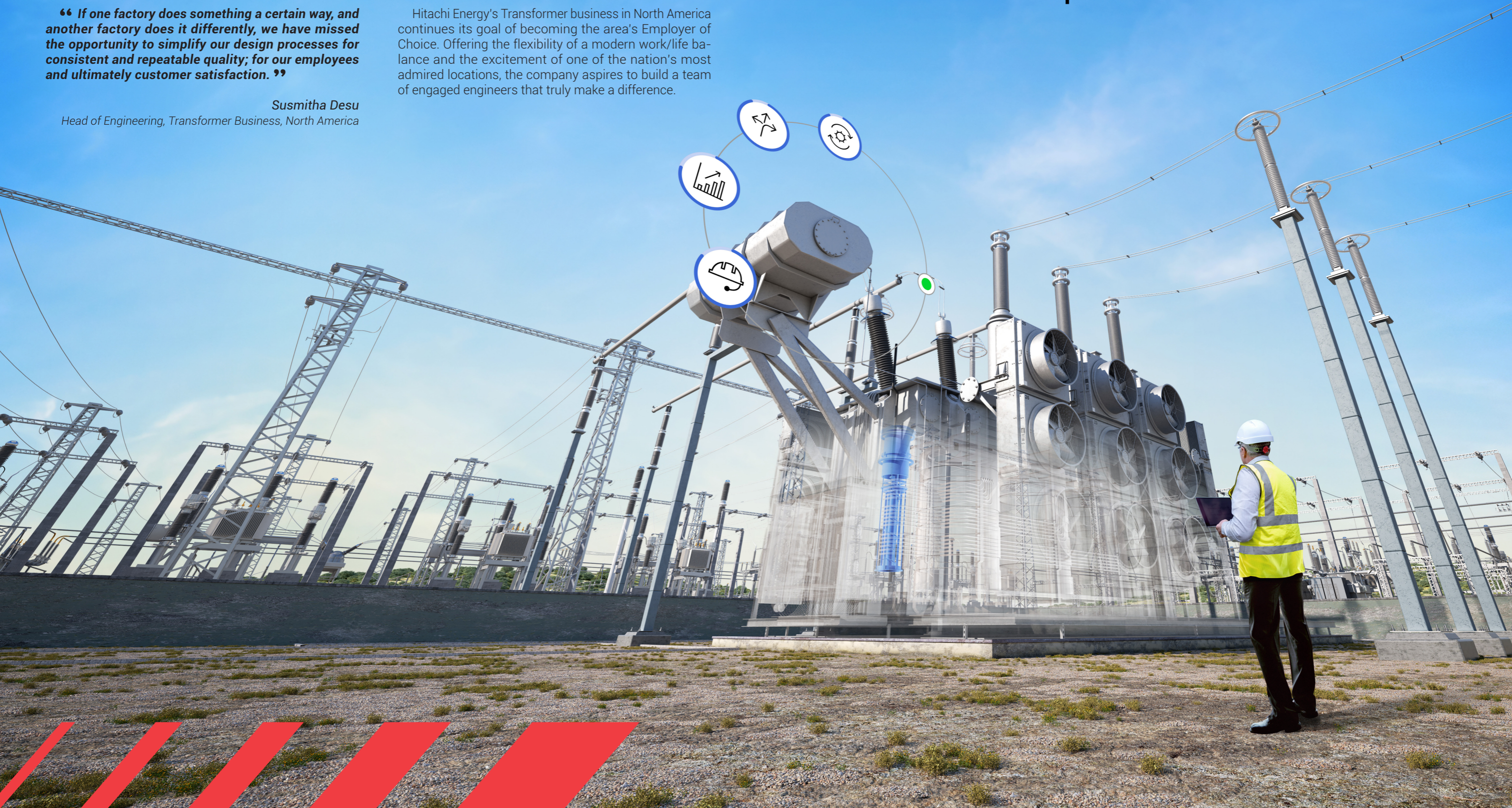


Photo: Hitachi Energy

Career inquiries can go to [hitachienergy.com/career](https://hitachienergy.com/career)

