

How Edge AI Helps Optimize EV Charging Locations: Real Results from Grid Operators

by **Binesh Kumar**
+++++



Grid operators now rely on Edge AI solutions to manage and optimize charging stations effectively. Studies from our research reveal that

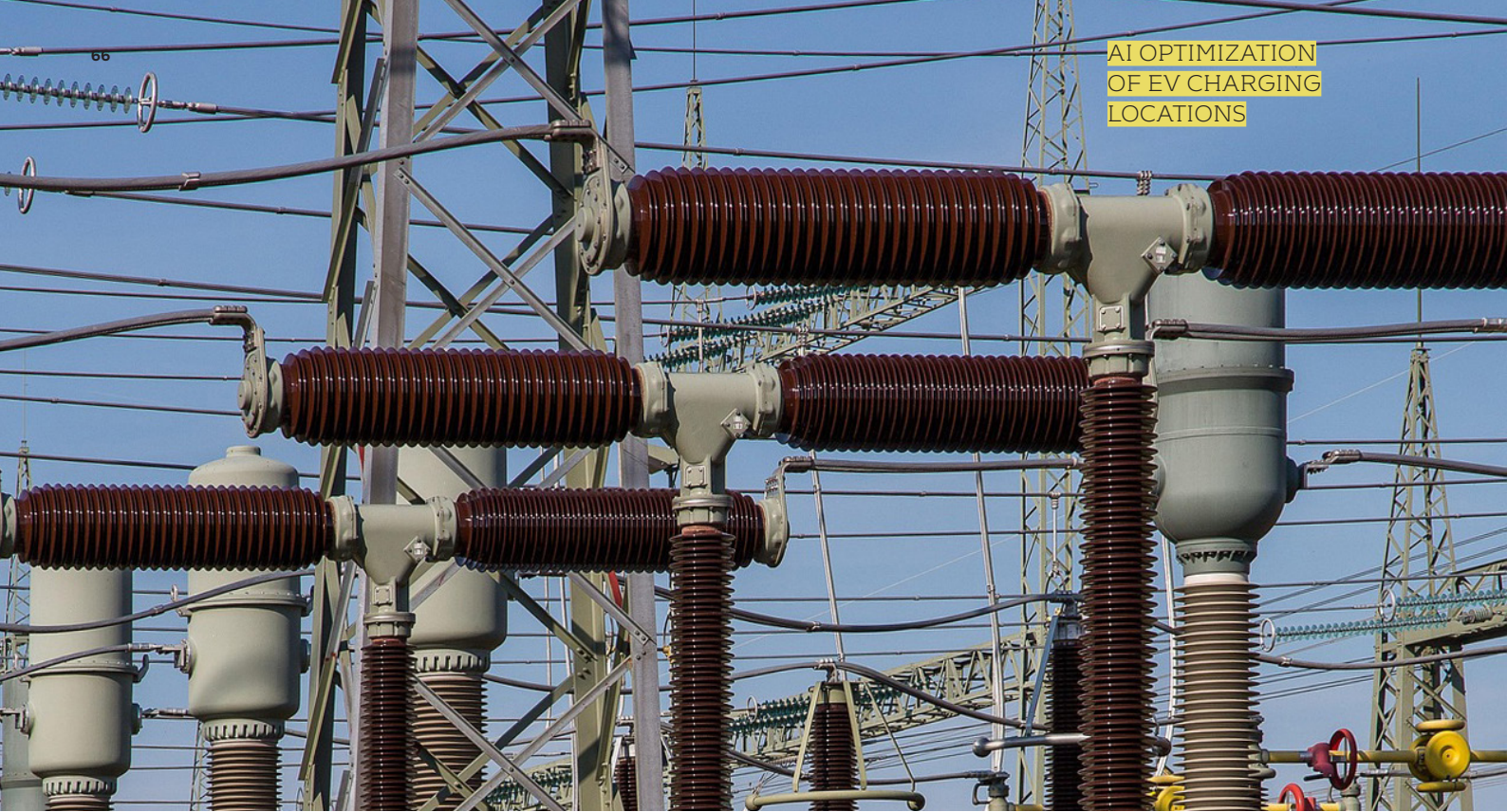


Binesh Kumar is a seasoned technology leader and engineering innovator specializing in the power and energy sector. As Director of Engineering at Atom Power Inc. in Charlotte, North Carolina, he has been at the forefront of advancing embedded systems and electrification technologies for over a decade. Binesh's expertise spans substation optimization, grid modernization, and the integration of cutting-edge technologies such as IoT, AI, and Edge Computing into power systems. An active IEEE Senior Member, Binesh serves in several leadership roles within IEEE, contributing to the advancement of technology standards and fostering industry-academic collaboration. His passion lies in solving complex challenges in energy management, driving sustainable solutions, and enabling the transition to a cleaner, electrified future. When not driving innovation, Binesh engages in thought leadership through writing and speaking engagements, sharing insights to empower the energy and engineering communities.

Europe's electric vehicle charging infrastructure has seen remarkable growth, with a 580% increase in public charging points since 2015. The continent now boasts over 330,000 charging points, with the Netherlands leading at 122,000 and Germany following with 65,000. EVs will likely make up almost 50% of all car sales by 2030, making the optimization of charging locations more crucial than ever before.

Edge AI implementation can optimize performance by 22% and lower assistance costs by 37%. The system's live alerts help reduce call-out costs by 47%, making EV charging more efficient and affordable.





Grid operators now rely on Edge AI solutions to manage and optimize charging stations effectively. Studies from our research reveal that Edge AI implementation can optimize performance by 22% and lower assistance costs by 37%. The system's live alerts help reduce call-out costs by 47%, making EV charging more efficient and affordable. Electricity needs will grow by 20% by 2030, so we'll look at how Edge AI transforms charging station management and prepares grid operators for electric mobility's future.

Understanding Edge AI's Role in EV Charging Infrastructure

Edge AI systems are the foundations of modern EV charging infrastructure. These systems process data right at charging stations and send only essential information to the cloud. This approach substantially improves operational efficiency and cuts data transfer costs.

Core components of Edge AI systems

Three key elements make up the foundation of Edge AI charging infrastructure:

- Advanced monitoring systems that track station performance and component health

- Predictive AI models that analyze operational patterns
- Live optimization algorithms that manage power distribution

These components create an intelligent charging ecosystem together. The ecosystem can predict maintenance needs and cut downtime. The system also keeps track of critical parameters like temperature, cable conditions, and battery status. This helps teams step in before failures happen.

Live data processing capabilities

Edge AI processes charging station data instantly. It looks at power consumption patterns and grid stability closely. Data processing happens right at the charging station level. This speeds up data collection and decision-making. The approach has showed remarkable efficiency gains. CUDA-accelerated GPU processing can optimize for a 500-EV parking lot in under 30 seconds.

Live capabilities go beyond basic processing. Particle swarm optimization algorithms calculate different charging schedules. They look at various factors like vehicle arrival times, departure schedules, energy demand patterns, and time-based electricity costs.

Integration with existing grid infrastructure

Edge AI works seamlessly with existing grid infrastructure to maintain stability and optimize power distribution. Edge computing helps control energy loads in real time, which helps keep the grid stable during emergencies. Smart edge nodes can balance charge schedules across multiple EVs without putting too much strain on local transformers.

The system manages loads in sophisticated ways. Research suggests that smart EV charging could reduce peak loads by 10-15%. Smart energy meters can quickly move power to high-demand spots while slowing down charging during peak times.

Edge AI systems improve grid stability and optimize energy use through advanced demand forecasting and autonomous load adjustments. This integration supports vehicle-to-grid technology and provides ancillary services that make modern energy grid operations stronger.

Optimizing Charging Station Locations Through AI Analytics

AI analytics is a vital tool that helps determine the best locations for EV charging stations. GM's data scientists showed this by using

predictive analytics and geospatial algorithms to review EV traffic patterns in the United States.

Key location factors and data points

The selection of charging station locations depends on several critical factors:

- Traffic flow analysis and proximity metrics
- Population density and demographic data
- Grid infrastructure capacity
- Existing charging station distribution
- Local amenities and points of interest

These factors are the foundations of a mathematical optimization problem that weighs both economic and environmental costs. The original analysis uses data from existing infrastructure to identify gaps in coverage and areas where we just need more stations.

Demand prediction models

Advanced deep neural networks, specifically a2-LSTM models, have

achieved remarkable accuracy in predicting charging demands. These models are shown compared to traditional LSTM networks 9.2% reduction in Root Mean Square Error. Categorical Boosting Regression models performed even better with the lowest mean absolute error of 0.0726 and root mean square error of 0.1059.

The demand prediction process works at a 15-minute time resolution to forecast charging requirements precisely. This detailed approach helps us understand peak usage patterns and optimize resource allocation.

Geographic optimization algorithms

Geographic optimization uses sophisticated algorithms based on finding potential locations for new charging stations (Voronoi diagrams). This numerical approach weighs proximity properties and existing infrastructure to determine optimal placement. Custom K-means clustering algorithms now include charging demand and energy consumption patterns that ended up improving how charging infrastructure is deployed strategically.

The optimization process handles both urban and non-urban areas through the H3 spatial grid system, which models spatial data accurately

in areas with different population densities. This method works especially well when you have to minimize competition between stations while ensuring convenience for long-distance EV users.

Real-World Implementation Case Studies

Leading organizations now use Edge AI solutions to find the best EV charging locations. This has led to big improvements in how they work and cut costs.

Major utility deployment examples

Oxfordshire County Council leads the way with an advanced Edge AI system. They combine geospatial modeling with various data sources to place charging infrastructure better. The solution helps planners and charge point operators work together through AI-driven insights. It's worth mentioning that this system puts local communities first while making the most of infrastructure budgets.

The Royal Military College of Canada offers another interesting example. They created a smart solution that works out the best charging schedules for large parking lots in real time. Their system looks at



Photo: Shutterstock

when vehicles arrive, when they leave, and energy costs to figure out the best charging combinations. The results were impressive - their system could work out schedules for 500 vehicles in less than 30 seconds.

Measured performance improvements

Edge AI systems have brought some big, measurable improvements:

- Predictive maintenance optimization: 22% performance improvement.
- Assistance cost reduction: 37% decrease in maintenance expenses.
- Call-out cost reduction: 47% improvement in emergency response efficiency.

We used Edge AI at charging stations to process data locally, which meant less data needed to go to the cloud. This led to faster data collection and better security protocols.

ROI analysis and metrics

Edge AI brings clear financial benefits to EV charging infrastructure. Studies show that EV maintenance costs 40% lower than regular vehicles. The energy cost analysis shows a 75% reduction in running costs compared to regular fuel vehicles over the battery's life.

The ROI calculations look at several ways to make money:

- Direct charging fees
- Partnership revenues with fleet operators
- Advertising income
- Priority charging services

These systems show that when AI analytics help place charging stations in the right spots, they can earn about 7% ROI after covering all running costs. The benefits go beyond money - charging stations work better and customers are happier.

Grid Impact Assessment and Management

Smart control systems and careful planning help manage how EV charging stations affect the power grid. The grid needs sophisticated integration because a single EV charging station uses 6.6kW – equivalent to an entire house's power consumption.

Load balancing strategies

Smart grid technology helps distribute power loads efficiently across charging networks. Research shows we could power about 160 million vehicles using existing off-peak generating capacity. The system tracks energy use at each charging point and distributes available power. This ensures maximum output without overloading the infrastructure.

Advanced load management systems talk to individual chargers for smart power sharing. These systems can temporarily reduce power at certain stations to help others and prevent grid overload.

The charging load adjusts every second based on several factors:

- Charging urgency requirements
- Current energy pricing
- Customer priority levels
- Available power capacity

Peak demand optimization

Smart charging management has shown impressive results in reducing peak demand. Studies show that good demand-side management can cut energy costs by 20%. Adding EVs to these management systems reduces grid strain by 25% during busy periods.

Smart grid technology helps manage EV charging demand, especially during high-usage times. The system changes electricity prices based on current demand. This encourages users to charge their vehicles when fewer people are using power.

Grid stability maintenance

Grid stability needs constant monitoring of health and performance metrics. The system spots faults, demand changes, and unexpected events automatically. Electric Power Research Institute's research reveals a concerning fact - just two customers using 6.6 kW charging stations during peak times could overload about 40% of today's distribution transformers.

The system's advanced features let it adapt quickly to changing conditions. This helps maintain reliable operation. AI-driven charging algorithms calculate the best way to split energy between battery storage and grid power in real time. This method works well to prevent disruptions and minimize effects on grid operations.

Operational Efficiency Improvements

AI-powered predictive maintenance and smart resource management are the lifeblood of modern EV charging operations. Advanced AI algorithms help charging station operators to detect and resolve 80% of charger-related issues remotely.

Maintenance cost reduction

AI-powered predictive maintenance has changed how charging stations operate and maintain their infrastructure. The system looks at component wear patterns and spots potential failures before they happen. This proactive approach brings several benefits:

- Remote issue resolution capabilities
- Automated maintenance scheduling
- Reduced unexpected downtime
- Extended equipment lifespan
- Lower repair costs

The AI model triggers maintenance workflows and alerts technicians automatically when it predicts component failure.



This proactive strategy has reduced maintenance expenses by approximately 37% instead of waiting for equipment to fail.

Resource allocation optimization

Smart resource management focuses on creating better charging schedules based on multiple factors. The system looks at vehicle arrival times, departure schedules, and energy costs to find the best charging combinations. Particle swarm optimization algorithms make the system highly efficient, as it processes schedules for 500-vehicle lots in under 30 seconds.

Dynamic pricing models help spread charging demand throughout the day, despite their complexity. The system analyzes past usage patterns and customer behavior to make data-driven decisions. Charging station operators can maximize throughput and maintain service quality this way.

Edge AI systems improve grid stability and optimize energy use through

advanced demand forecasting and autonomous load adjustments.

This integration supports vehicle-to-grid technology and provides

ancillary services that make modern energy grid operations stronger.

Energy efficiency gains

Advanced AI algorithms showed remarkable improvements in energy efficiency. The system achieved energy savings up to 49% during short 50km journeys by analyzing road topology and wind conditions. These savings remain unrealized if optimal routes aren't selected.

Renewable energy integration has definitely made a big difference. Studies reveal a 42% reduction in electricity demand at charging stations through renewable energy integration. This approach ended up reducing costs by 69% compared to non-renewable scenarios.

Time-of-use optimization is a vital factor in energy efficiency. The system calculates various charging schedule combinations and selects options that minimize costs while preventing grid overload. This approach reduces reliance on fossil-fuel power plants during peak hours and results in lower emissions and better grid stability.

Conclusion

Edge AI solutions are revolutionizing EV charging infrastructure with remarkable results. The numbers tell the story - a 22% boost in performance, 37% lower assistance costs, and 47% fewer call-out expenses. These results come from ground implementations that show what's possible.

Smart grid integration uses sophisticated AI algorithms to handle peak needs while keeping the grid stable. The system's speed is impressive - it processes charging schedules for 500-vehicle lots in just 30 seconds. On top of that, operators can spot and fix 80% of charger problems remotely, which saves a lot of money.

Energy efficiency gains are a big deal. Advanced routing algorithms help save up to 49% energy during short trips. The integration of renewable energy cuts the need for electricity at charging stations by 42%. These results show that Edge AI technology provides practical answers to the growing EV charging infrastructure needs, which will support the expected 50% EV market share by 2030.